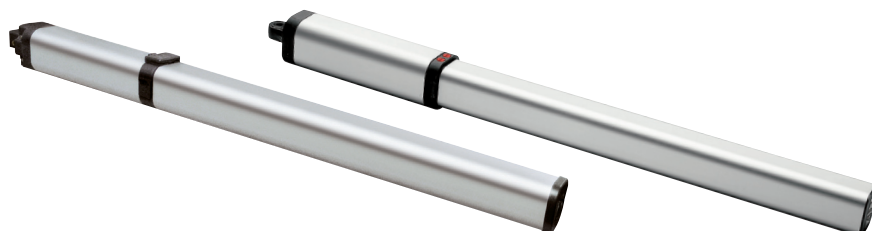


LUX - LUX BT

HYDRAULIC OPERATOR FOR SWING GATES



UL 325
COMPLIANT



• A MODEL FOR EVERY NEED.

→ Several versions available: with slowdown, internal positive stops, longer stroke. All of them are irreversible.

• SAFE USE.

→ Crushing prevention guaranteed by two adjustable bypass valves.

REFERENCE	DESCRIPTION	VOLTAGE	LEAF WEIGHT	LEAF LENGTH
P935080 00001	LUX BT 2B	24 V	up to 660 lbs (~300 kg)	up to 10' (3 m)
P935083 00001	LUX G BT 2B	24 V	up to 1750 lbs (~800 kg)	up to 16' (5 m)
P935011 00013	LUX 2B UL/CSA	120 V	up to 660 lbs (~300 kg)	up to 10' (3 m)
P935039 00002	LUX FC 2B UL/CSA	120 V	up to 660 lbs (~300 kg)	up to 10' (3 m)
P935046 00004	LUX R 2B 2SN UL/CSA	120 V	up to 660 lbs (~300 kg)	up to 10' (3 m)
P935014 00010	LUX GV2B UL/CSA	120 V	up to 700 lbs (~320 kg)	up to 15' (4,5 m)

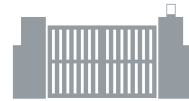
TECHNICAL FEATURES

	LUX BT	LUX G BT	LUX 2B UL/CSA
CONTROL PANEL	LIBRA CLX	LIBRA CLX	RIGEL 4 UL/CSA (suggested)
REVERSIBLE/IRREVERSIBLE OPERATOR	irreversible	irreversible	irreversible
POWER SUPPLY	24V	24V	120 V, 60 Hz single-phase
ABSORBED POWER	0.4 hp (300W)	0.4 hp (300W)	0.33 hp (250 W)
THERMAL PROTECTION	integrated in the control board	integrated in the control board	integrated
ROD WORKING STROKE	10.6" (270 mm)	15.4" (392 mm)	10.63" (270 mm)
ROD SPEED	0.55 ips (14 mm/s)	0.55 ips (14 mm/s)	0.55 ips (14 mm/s)
OPENING AND CLOSING TIME	14s	20s	17 s
SLOWDOWN	-	-	-
IMPACT REACTION	hydraulic clutch	hydraulic clutch	hydraulic clutch
LOCK	hydraulic opening/closing	hydraulic opening/closing	hydraulic opening/closing
MANUAL RELEASE	release key	release key	release key
OPERATING CYCLE	intensive use	intensive use	intensive use
ENVIRONMENTAL CONDITIONS	from 14°F (-10°C) to 140°F (+60°C)	from 14°F (-10°C) to 140°F (+60°C)	from 14°F (-10°C) to 140°F (+60°C)
DEGREE OF PROTECTION	IP55	IP55	IP57
OPERATOR WEIGHT	19 lbs (-8,7 kg)	19 lbs (-8,7 kg)	19 lbs (-8,7 kg)
DIMENSIONS	see drawing next page	see drawing next page	see drawing next page

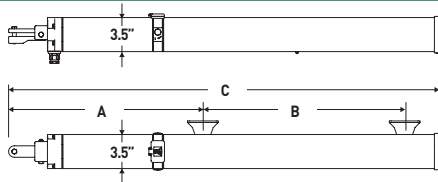
TECHNICAL FEATURES

	LUX FC 2B UL/ CSA	LUX R 2B 2SN UL/CSA	LUX GV 2B UL/CSA
CONTROL PANEL	RIGEL 4 UL/CSA (suggested)	RIGEL 4 UL/CSA (suggested)	RIGEL 4 UL/CSA (suggested)
REVERSIBLE/IRREVERSIBLE OPERATOR	irreversible	irreversible	irreversible
POWER SUPPLY	120 V, 60 Hz single-phase	120 V, 60 Hz single-phase	120 V, 60 Hz single-phase
ABSORBED POWER	0.33 hp (250 W)	0.33 hp (250 W)	0.33 hp (250 W)
THERMAL PROTECTION	integrated	integrated	integrated
ROD WORKING STROKE	11.02" (280 mm)	9.84" (250 mm)	15.35" (390 mm)
ROD SPEED	0.55 ips (14 mm/s)	0.55 ips (14 mm/s)	0.55 ips (14 mm/s)
OPENING AND CLOSING TIME	18 s	16 s	27 s
SLOWDOWN	-	on rod extension	-
IMPACT REACTION	hydraulic clutch	hydraulic clutch	hydraulic clutch
LOCK	hydraulic opening/closing	hydraulic opening/closing	hydraulic opening/closing
MANUAL RELEASE	release key	release key	release key
OPERATING CYCLE	intensive use	intensive use	intensive use
ENVIRONMENTAL CONDITIONS	from 14°F (-10°C) to 140°F (+60°C)	from 14°F (-10°C) to 140°F (+60°C)	from 14°F (-10°C) to 140°F (+60°C)
DEGREE OF PROTECTION	IP57	IP57	IP57
OPERATOR WEIGHT	19 lbs (-8,7 kg)	19 lbs (-8,7 kg)	19 lbs (-8,7 kg)
DIMENSIONS	see drawing next page	see drawing next page	see drawing next page

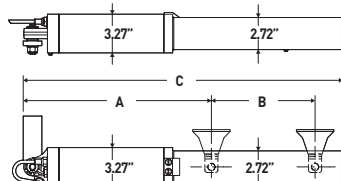
RESIDENTIAL AND COLLECTIVE USE



DIMENSIONS LUX BT - GBT

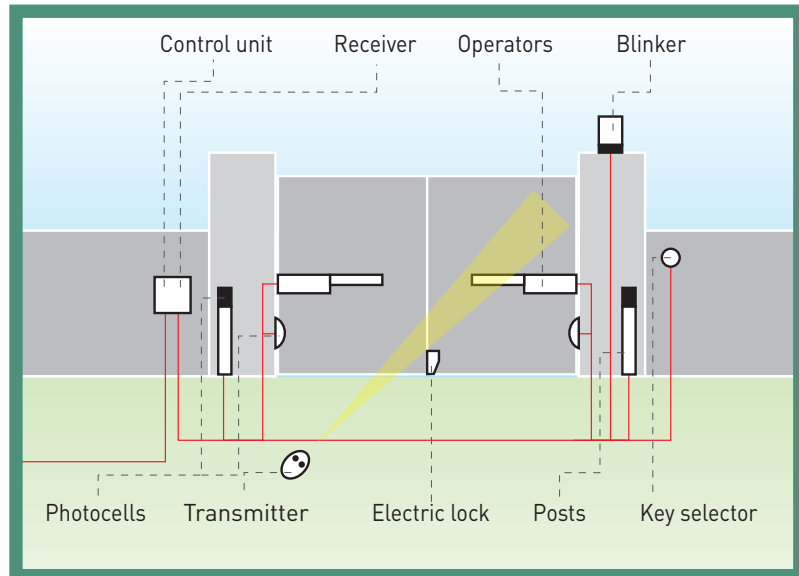


DIMENSIONS SERIE LUX



	A	B	C		A	B	C
LUX BT	30.7"	10.6"	43.8"	LUX FC 2B UL/CSA	33.46"	*11.02"	51.97"
LUX G BT	36.6"	15.4"	54.3"	LUX R 2B 2SN UL/CSA	27.95"	**9.84"	41.34"
LUX 2B UL/CSA	28.15"	10.53"	40.35"	LUX GV 2B UL/CSA	33.46"	15.35"	51.18"

* (+ spring compression) ** (+ slowdown)



ACCESSORIES



D113693 00001 RIGEL 5 120 V NO CAPACITORS

• Control panel for one or two single-phase 120 V operators up to 0.8 hp (600 W) each. • Easy programming and diagnosis through LCD display. • Torque and brakesetting. • 3 and 4 steps logic with timer to close and hold-to-run control. • Adjustable delay on opening and on closing. • Quick wiring through plug-in terminal strips. • Built-in rolling code receiver and plug-in connector for second receiver.



D113236 00003 - RIGEL 4 UL/CSA WITH CAPACITORS

• Control panel for one or two single phase 120V operators up to 0.5 hp (375 W) each. • This control panel requires the torque setting to be on the operators. • 2 and 4 steps logic with timer to close and hold-to-run control. • Adjustable delay on opening and on closing. • Self-diagnosis through LED. • Quick wiring through plug-in terminal strips. • Plug-in connector for receiver. UL/CSA approved. Fuse value: transformer 2A T, logic 1A T.



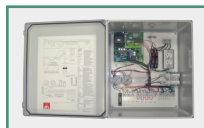
D113715 00001 - LIBRA CLX

• Removable terminal strips, programming with display and built-in twin-channel receiver • Main functions: AUTOSET, motor torque and slow-down management, time lag during opening and closing, pedestrian opening, separate open/close, fast closing and self-diagnosis • Field of application: swing gates. Fuse value: transformer 2A T, logic 1A T.



KD113693 00001 - RIGEL 5 WITH CAPACITORS

Same features as Rigel 5 but with added capacitors for use on 120V Hydraulic operators. Fuse value: transformer 2A T, logic 1A T.



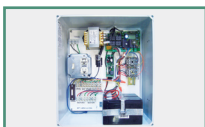
KERIG5C004U

Pre-wired 16" x 18" (40 x 45 cm) enclosure box with RIGEL 5 120V control board. Features: 2 loop detector sockets (1 free exit, 1 safety), 1 test button, easy connection for motors and accessories, 2 120V power outlets, surge arrester lightning protection, individual circuit breakers for control board and power outlets. NEMA 4x rated.



KERIG4C003U

Pre-wired 16" x 18" (40 x 45 cm) enclosure box with RIGEL 4 UL/CSA control board. Features: 2 loop detector sockets (1 free exit, 1 safety), 1 test button, easy connection for motors and accessories, 2 120V power outlets, surge arrester lightning protection, individual circuit breakers for control board and power outlets. NEMA 4x rated.



KELIBC010U - LIBRA CLX 14 X 16 PRE-WIRED ENCLOSURE.

Pre-wired 14 x 16 enclosure box with Libra CLX and 2 -9Amp/h batteries for back-up.



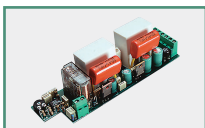
BFT-1200MLKIT - 1200 LB MAGLOCK KIT

Magnetic lock Kit including bracket, relay and power supply.



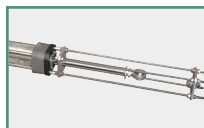
D111704 - SSR5

Traffic light and preheating board for RIGEL 5 control panel.



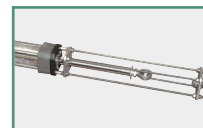
D113050/110 - SPL 120 V

Pre-heating board for 1 or 2 LUX, SUB, P4,5-P7 and E5 operators. Can be fitted inside control panels RIGEL 4 UL/CSA, ALCOR UL/CSA.



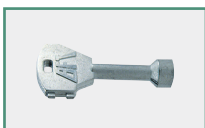
LUXR2BIPS

Concealed adjustable internal positive stops for LUX R 2B 2SN.



LUXGV2BIPS

Concealed adjustable internal positive stops for LUX LUX GV 2B.



D610180 - CLS/52

Release key for LUX, PHOBOS BT, PHOBOS BT L and DEIMOS BT.



I101615

IDROLUX WINTER Hydraulic oil for low temperatures, 2 lt can. Always use the same grade oil when refilling.



P121019 - T-BOX

Digital keypad with 10 channels and 100 combinations. Backlit