

SP4000

ELECTROMECHANICAL AUTOMATION FOR RACK SLIDING GATES



• SMART TECHNOLOGY.

→ Hydrodynamic joint for smooth gate starts and stops.

• SAFE USE.

→ The strength and compactness of the structure guarantee the maximum reliability of operation over time.

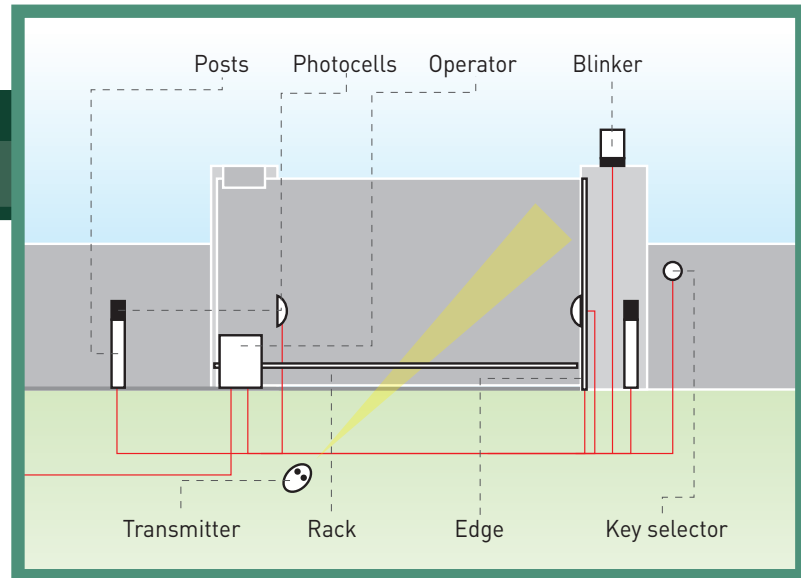
→ The operator makes it possible to automate any type of gate, even the heaviest.

| CODE | DESCRIPTION | VOLTAGE | LEAF WEIGHT |
|---------------|--------------------|-------------------|---------------------------|
| P925169 00001 | SP4000 | 400 V three-phase | up to 8800 lbs (~4000 Kg) |
| P925169 00002 | SP4000 230V | 230 V three-phase | up to 8800 lbs (~4000 Kg) |

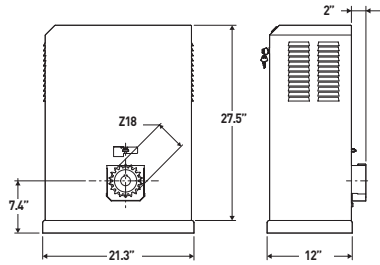
TECHNICAL FEATURES

SP4000

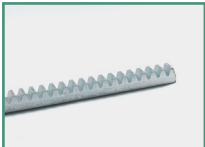
| | |
|----------------------------------|--|
| CONTROL PANEL | SIRIO TEL (incorporated) |
| REVERSIBLE/IRREVERSIBLE OPERATOR | irreversible |
| POWER SUPPLY | 120 V- ± 10%, 50 Hz three-phase |
| ABSORBED POWER | 2 hp (1500 W) |
| THERMAL PROTECTION | overload cutout inside the control panel |
| LEAF SPEED | 32'/min |
| OUTPUT REVOLUTIONS | 30 min |
| PINION PITCH | 6 (18 teeth) |
| TYPE OF LIMIT SWITCHES | electromechanical |
| MANUAL RELEASE | mechanical release with knob |
| OPERATING CYCLE | very intensive use |
| ENVIRONMENTAL CONDITIONS | from 5°F (-15°C) to 140°F (+60°C) |
| DEGREE OF PROTECTION | IP 24 |
| OPERATOR WEIGHT | 187 lbs (~85 kg) |
| DIMENSIONS | see drawing |



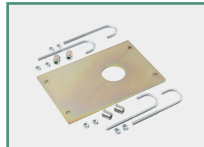
DIMENSIONS



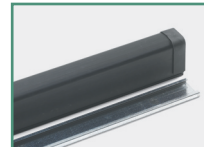
ACCESSORIES



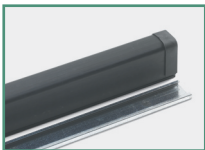
D571491 - CFZ6
30x30 6-pitch rack. 2 m lengths..



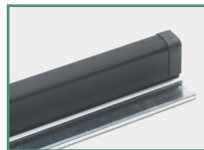
P125001 - BASP
Adjustable anchoring base.



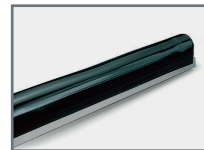
N190039 - CSP 10
Shock absorber profile, length 39".



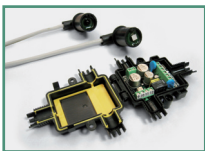
N190040 - CSP 20
Shock absorber profile, length 78".



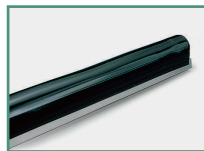
N190041 - CSP 25
Shock absorber profile, length 98".



N190105 - BAR C
Rubber safety edge with double profile.



P111401 00001 - VENTIMIGLIA NS
Infrared obstacle detection device for BIR C safety edge compliant with standard EN 12978.



N190104 - BIR C
Rubber safety edge.