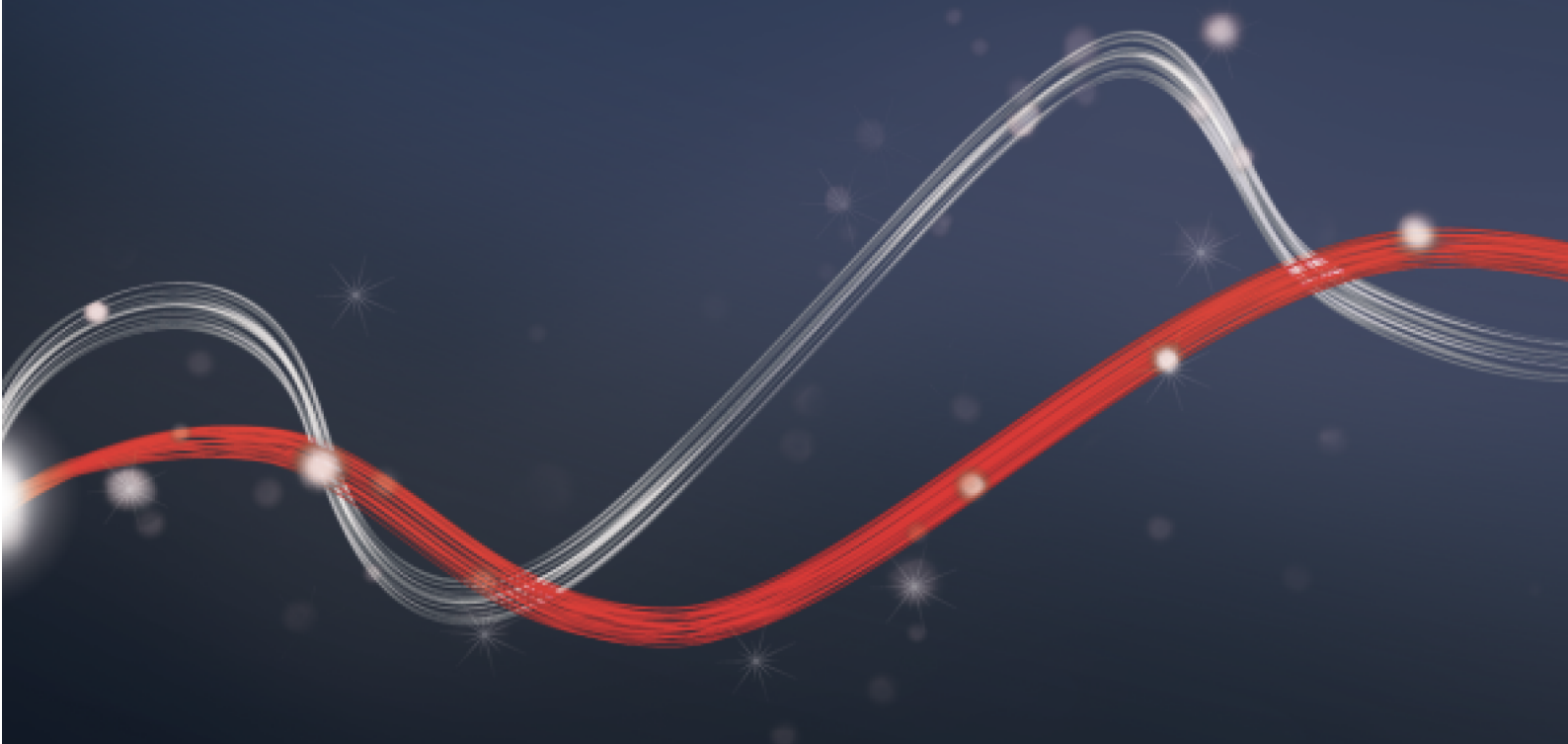




Be ahead



E5 BT A



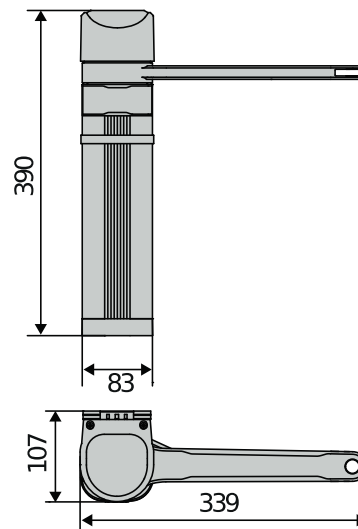


E5 BT A



Empowered by
U-LINK

Electromechanical automation systems for swing gates



24V reversible electromechanical operator for swing gate panels for pedestrian and vehicular access, for use in homes, apartment buildings and commercial areas. Its small size means it can be installed on small pillars and columns (minimum width required 8cm). The slide arm option means constraints such as walls and obstacles close to the operator can be overcome. The limit switch function is regulated by the absolute encoder. The safety of the operator is guaranteed thanks to the D-track system which precisely determines the position and force with which the gate moves, using the friction inside the operator and the new articulated and slide arms with anti-shear design.

Relevant features



U-LINK **U-Link platform:** Using the Thalia control unit, the E5 BT A operator is compatible with the U-Link communication protocol, the exclusive Bft connectivity platform.



d-track

D-Track dynamic path tracking: smart torque management system that constantly updates the gate torque level, improving the safety of the maneuver regardless of weather conditions, temperature or the degree of wear of the system.

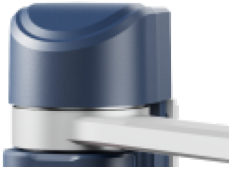


Electromechanical automation systems for swing gates



Empowered by
U-LINK

Relevant features



Absolute Encoder: absolute encoder means that the E5 BT A recognises the position of the gate at any time, managing the slow down phase during opening and closing with absolute precision.



Easy Assembly

Ease of installation: the fixing bracket on the column or pillar provides simpler installation. The Thalia control unit has standardised colour terminal blocks which simplifies the identification of the outputs / inputs. The removable terminal blocks facilitate the wiring process. Extremely easy to set the closing and opening limit switches.



6,5 sec

Speed: The E5 BT A12 takes only 4.5 to 6.5 seconds (90 ° manoeuvre including slowdown) to open, based on the weight and dimensions of the leaf.



push&go

Push&Go: When activated, the Push & Go function allows the gate to open completely when manually pushed.



Multi-resident or commercial sites: The E5 BT A12 is ideal for apartment block installations or public buildings, with features such as remote opening from inside the building and the ability to set the gate to close automatically after opening, preventing it being left open.

**Electromechanical automation systems for swing gates****E5 BT A**

Code	Name		Description	
P930027 00003	E5 BT A12		Reversible compact pedestrian electromechanical operator of small size that can be installed on pillars or columns only 80mm wide Application for pedestrian gates up to 1.2m wide and up to 80kg in weight Closes in 6.5s (ideal installation conditions) Operatore dotato di leva primaria, a cui va aggiunto il braccio articolato o la leva a slitta corta (accessori)	
P930027 00001	E5 BT A18		Reversible compact vehicular electromechanical operator of small size that can be installed on pillars or columns only 80mm wide Application for pedestrian gates up to 1.8m wide and up to 100kg in weight Operatore dotato di leva primaria, a cui va aggiunto il braccio articolato o la leva a slitta lunga (accessori)	

THALIA: Control panel with display for one or two 24V electromechanical operators for swing gates**D113745 00002 - THALIA - Recommended**

- Application: control panel with display for one or two 24V electromechanical operators for swing gates
- Card power supply: 230 V single-phase
- Operators power supply: 24Vdc 180W max each operator
- Main features: new standard colour removable terminal blocks, simplified scenario-based programming with display and integrated dual-channel receiver, D-Track anti-crushing system, slowdown during opening and closing and electronic self-learning.
- Main functions: automatic re-closing, fast closing, partial opening, deadman feature
- Compatibility: LIBRA C MA, LIBRA, LIBRA R, LIBRA MA R

	E5 BT A12	E5 BT A18
Control unit	THALIA	THALIA
Board power supply	230 V	230 V
Motor voltage	24 V	24 V
Max. weight of door/gate wing	80 kg	100 kg
Power consumption	40 W	40 W
Max. width of door/gate wing	1,20 m	1,80 m
Cycle time	6,50 s	14 s
Type of limit switch	Absolute encoder	Absolute encoder
Release	Reversible	Reversible
Impact reaction	D-Track	D-Track
Frequency of use	Residential	Semi intensive
Degree of protection (IP)	IP44	IP44
Environmental conditions	-10 ÷ 60 °C	-10 ÷ 60 °C







RECOMMENDED ACCESSORIES

	D113747 00002 - THALIA P		N734921 - LBA
	Control panel for one or two 24V electromechanical and hydraulic operators for swing gates with electric lock management, for highly complex systems		Lever for articulated arm, E5 BT A12, E5 BT A18



Electromechanical automation systems for swing gates

RECOMMENDED ACCESSORIES

	new N735057 - LS12		new N735058 - LS18
	Short pedestrian slide lever for E5 BT A12		Long slide lever for E5 BT A18
	new D114093 00003 - RADIUS LED BT A R1		new D114168 00003 - RADIUS LED BT A R1 W
	Flashing light with incorporated antenna for motors with 24 V power supply.		Flashing light with incorporated antenna for motors with 24 V power supply. White flashing light.
	new D114094 00003 - RADIUS LED BT A R0		new P111782 - COMPACTA A20-180
	Flashing light without incorporated antenna for motors with 24 V power supply.		Pair of photocells adjustable 180° horizontally. 20 metre range. 12-33 VAC/15-35 VDC power supply.



E5 BT A



Electromechanical automation systems for swing gates



Empowered by
U-LINK

What is U-Link?

The technology that gives you more power

U-Link, Universal Link, is an exclusive BFT platform that can be used to create high-tech ecosystems.

In Home Access Automation, it can be used to communicate with all home access automation devices of any brand. This saves you time and allows you to control everything easily and without any worries.

It is intuitive

Easy to install and to use

It is scalable

You can add as many devices as you want

It is flexible

It allows you to create groups of interconnected products

It is practical

Works with or without an internet connection

It is functional

Its settings can be controlled remotely using dedicated applications



Electromechanical automation systems for swing gates



Everything on one screen: find out more about this amazing technology

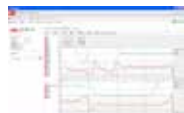
A world-exclusive platform that **can be used to create high-tech ecosystems** offering a vast range of solutions for many different sectors.

This proprietary platform which is a key feature of BFT products, thanks to the B-EBA cards and the Clonix U-Link receiver, is suitable for any protocol or product for access automation (including BFT products non-BFT ones and older versions) and it can be used in a variety of different sectors. This means any device becomes a smart device which can be interconnected with other systems, using a language that is becoming universal.



U-Control HOME

U-Control HOME is the application that allows you to open the gate to your home and to remotely control BFT automations using your own smartphone. The iOS version can be used to automatically open the automation when you are close to it.



U-Base 2

A software package for installation, performing maintenance and identifying any faults in the U-Link compatible operators, easily and conveniently.



U-SDK

U-SDK is the application which allows BFT automations to be made compatible and easily integrated with a BMS network.



Clonix U-Link

Connect non-native U-Link and non-BFT products to U-Link systems.

Is it possible to connect non-native U-Link BFT operators or other brands of products to U-Link? Yes, thanks to the Clonix receivers. Accessories which accept no limits.



B-EBA

A direct link to your operators.

The B-EBA expansion cards make it possible to connect external devices such as PCs, smartphones and tablets to a BFT operator and a Clonix receiver or to connect multiple BFT products in a U-Link network. These accessories integrate with U-Link technology and with Bluetooth, Wifi, Z-Wave and TCP/IP protocols as well as with the RS485 serial interface. A device that demonstrates exactly what BFT means by interconnectivity.

