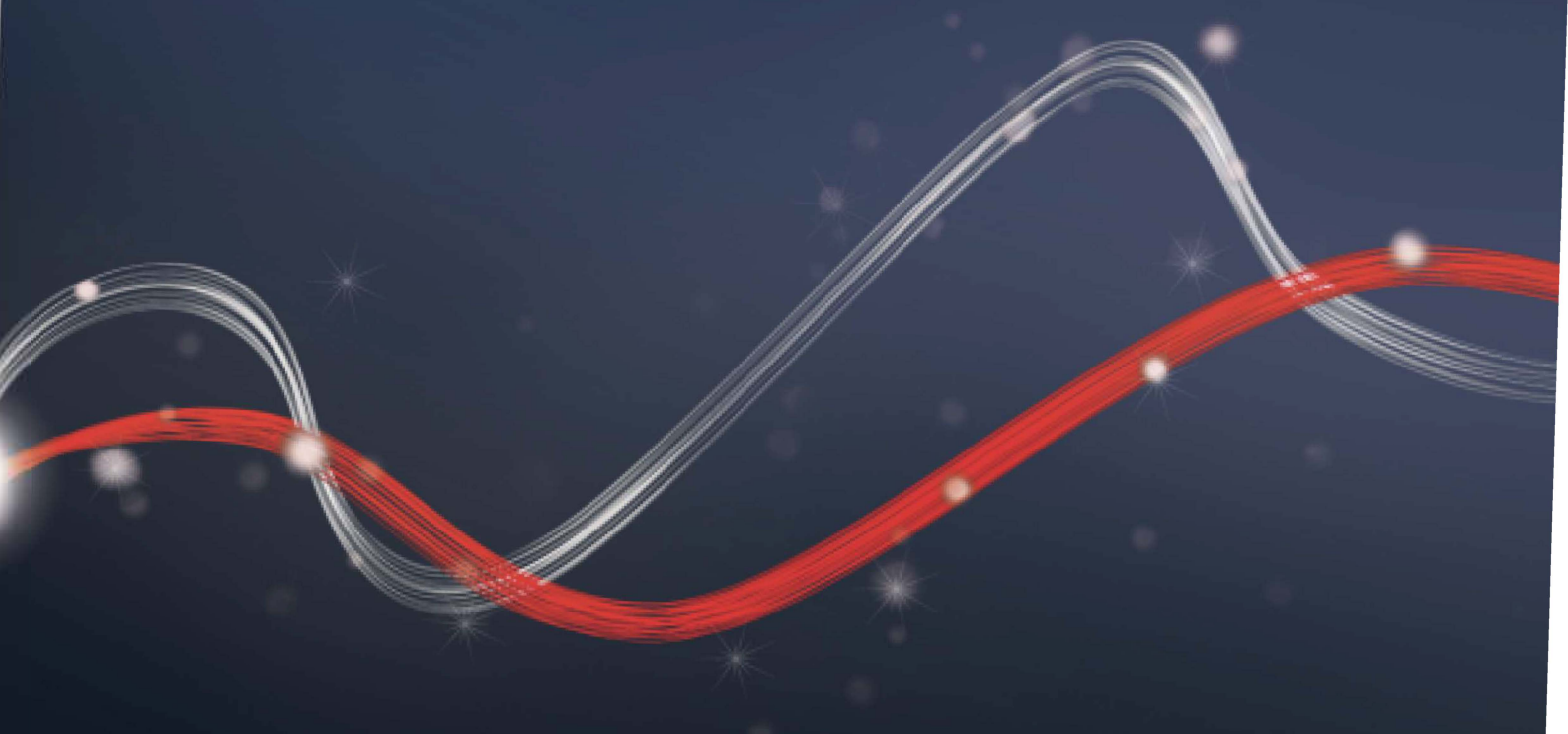




Be ahead



LUX

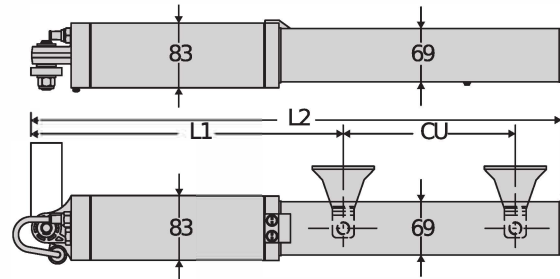




LUX



Hydraulic automation systems for swing gates



	L1	CU	L2
LUX / LUX B / LUX 2B	715	270	1025
LUX FC 2B	850	280	1320
LUX R 2B SN2	710	250	1050
LUX MB / LUX L	715	270	1025
LUX G	850	390	1300

Complete range of low voltage hydraulic pistons for very intensive use, suitable for any type of residential, industrial or multi-residence application. Compact and sturdy, capable of automating swing gate leaves up to 5 metres wide and weighing up to 800 kg. Available in both reversible and irreversible versions, with maximum precision in torque control guaranteed by by-pass valves.

Relevant features



All-aluminium structure with high-resistance anodising treatment.



The by-pass valves, in the 230V versions, allow the exact setting of the torque separately and independently for opening and closing.



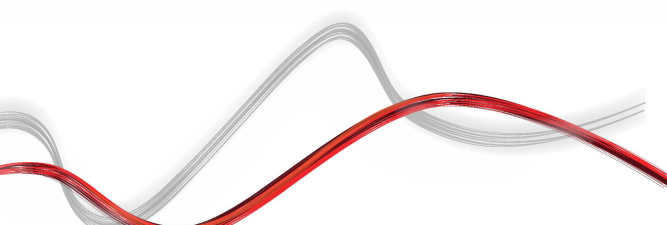
The slowdown during closing (R versions) guarantees silent, smooth movements on even the biggest gates. Also, the adjustment screw makes it possible to adapt the slowdown intensity to needs of each situation.



Hydraulic automation systems for swing gates

LUX

Code	CI	Name	Description
P935009 00001	2611693	LUX	Hydraulic operator 230 V for hinged leaves up to 2 m and 300 kg in weight, Useful travel 270 mm, manoeuvre time 17 s and maximum opening angle 123 ° Locking system: Solenoid Lock Reversible
P935025 00001	2611712	LUX SA	Hydraulic operator 230 V for hinged leaves up to 2 m and 300 kg in weight, Useful travel 270 mm, manoeuvre time 17 s and maximum opening angle 123 ° Locking system: Solenoid Lock Reversible
P935044 00001	2612761	LUX R	Hydraulic operator 230 V for hinged leaves up to 2.2 m and 300 kg in weight, Useful travel 270 mm, manoeuvre time 17 s and maximum opening angle 123 ° Locking system: Solenoid Lock Reversible
P935044 00002	2611719	LUX RSN2	Hydraulic operator 230 V for hinged leaves up to 2.2 m and 300 kg in weight, Useful travel 270 mm, manoeuvre time 17 s and maximum opening angle 123 ° Locking system: Solenoid Lock Reversible
P935010 00001	2600937	LUX B	Hydraulic operator 230 V for hinged leaves up to 2 m and 300 kg in weight, Useful travel 270 mm, manoeuvre time 17 s and maximum opening angle 123 ° Locking system: Hydraulic closing
P935027 00001	2611713	LUX BA	Hydraulic operator 230 V for hinged leaves up to 2 m and 300 kg in weight, Useful travel 270 mm, manoeuvre time 17 s and maximum opening angle 123 ° Locking system: Solenoid Lock Reversible
P935011 00001	2600017	LUX 2B	Hydraulic operator 230 V for hinged leaves up to 2 m and 300 kg in weight, Useful travel 270 mm, manoeuvre time 17 s and maximum opening angle 123 ° Locking system: Open/close hydraulics
P935011 00028	2611696	LUX 2B WINTER	Hydraulic operator 230 V for hinged leaves up to 2 m and 300 kg in weight Useful travel 270 mm, manoeuvre time 17 s and maximum opening angle 123 ° Locking system: Open/close hydraulics Extremely low temperatures
P935011 00013	2611694	LUX 2B UL/CSA 120V	Hydraulic operator 230 V for hinged leaves up to 2 m and 300 kg in weight, Useful travel 270 mm, manoeuvre time 17 s and maximum opening angle 123 ° Locking system: Open/close hydraulics Locking on closure/opening
P935046 00001	2611722	LUX R2B	Hydraulic operator 230 V for hinged leaves up to 2 m and 300 kg in weight, Useful travel 270 mm, manoeuvre time 17 s and maximum opening angle 123 ° Locking system: Solenoid Lock Reversible
P935046 00002	2611723	LUX R 2B SN2	Hydraulic operator 230 V for hinged leaves up to 2 m and 300 kg in weight, Useful travel 250 mm, manoeuvre time 16+rall, s and maximum opening angle 101 ° Locking system: Open/close hydraulics
P935039 00001	2600861	LUX FC 2B	Hydraulic operator 230 V for hinged leaves up to 2 m and 300 kg in weight, Useful travel 280 mm, manoeuvre time 17 s and maximum opening angle 117 ° Locking system: Open/close hydraulics
P935046 00004	2611724	LUX R 2B 2SN UL/CSA	Hydraulic operator 230 V for hinged leaves up to 2 m and 300 kg in weight, Useful travel 250 mm, manoeuvre time 16+rall, s and maximum opening angle 101 ° Locking system: Open/close hydraulics Locking on closure/opening
P935039 00002	2611716	LUX FC 2B UL/CSA	Hydraulic operator 230 V for hinged leaves up to 2 m and 300 kg in weight, Useful travel 280 mm, manoeuvre time 17 s and maximum opening angle 117 ° Locking system: Open/close hydraulics Locking on closure/opening
P935035 00001	2611714	LUX MB	Hydraulic operator 230 V for hinged leaves up to 2.3 m and 300 kg in weight Useful travel 270 mm, manoeuvre time 23 s and maximum opening angle 123 ° Locking system: Hydraulic closing Locking on closure
P935014 00001	2611702	LUX GV	Hydraulic operator 230 V for hinged leaves up to 3,5 m and 300 kg in weight, Useful travel 270 mm, manoeuvre time 17 s and maximum opening angle 123 ° Locking system: Solenoid Lock Reversible
P935012 00001	2600555	LUX L	Hydraulic operator 230 V for hinged leaves up to 4 m and 500 kg in weight, Useful travel 270 mm, manoeuvre time 33 s and maximum opening angle 123 ° Locking system: Solenoid Lock Reversible





Hydraulic automation systems for swing gates

LUX

Code	CI	Name	Description
P935049 00001	2611729	LUX LR	Hydraulic operator 230 V for hinged leaves up to 4 m and 500 kg in weight. Useful travel 270 mm, manoeuvre time 33 s and maximum opening angle 123 °. Locking system: Solenoid Lock Reversible
P935013 00001	2611699	LUX G	Hydraulic operator 230 V for hinged leaves up to 5 m and 800 kg in weight. Useful travel 390 mm, manoeuvre time 48 s and maximum opening angle 130 °. Locking system: Solenoid Lock Reversible
P935013 00022	2611701	LUX G WINTER	Hydraulic operator 230 V for hinged leaves up to 5 m and 800 kg in weight. Useful travel 390 mm, manoeuvre time 48 s and maximum opening angle 130 °. Locking system: Solenoid Lock Reversible. Extremely low temperatures. Extremely low temperatures
R935217 00002	2611900	LUX MB KIT	Kit for swing gates up to 2,3 m, 300 kg in weight. Hydraulic operators with useful travel 270 mm, max angle 123 °, locking Hydraulic closing and release Triangle key. Cycle time 23 s. Power input 250 W. Locking on closure

RIGEL 6 220-230V 50/60HZ: Universal control panel with display for one or two 230V - 650+650W operators



Cp D113833 00002 - CI 2600589 - RIGEL 6 220-230V 50/60HZ - Recommended



- Universal control panel with display for one or two 230V - 650+650W operators
- Application: universal control panel for one or two operators
- Card power supply: 230 V single-phase
- Operators power supply: 230V single-phase
- Main features: removable terminal blocks, programming and diagnostics with display, built-in four-channel receiver, electro lock, electronic torque limiter, electronic deceleration at opening and closing, a separate limit switch inputs for each motor, traffic light management, preheating hydraulic operators, weekly timer, possibility to delete a specific remote control, customization of the 4 radio channels, personalization of the duration of the delayed output, adjustable sensitivity to the obstacle.
- Main functions: automatic re-closing, separate motor working times, stays locked when closed, water hammer, 2/3/4 step logic, partial opening, fast closing, separate opening and closing
- Compatibility: RIGEL 5 - RIGEL 4 - RIGEL 3 - RIGEL N

	LUX	LUX SA	LUX R	LUX RSN2
Control unit	RIGEL 6	RIGEL 6	RIGEL 6	RIGEL 6
Motor voltage	230 V	230 V	230 V	230 V
Power consumption	250 W	250 W	250 W	250 W
Max. width of door/gate wing	2 m	2 m	2,2 m	2,2 m
Max. weight of door/gate wing	300 kg	300 kg	300 kg	300 kg
Useful rod stroke	270 mm	270 mm	270 mm	270 mm
Maximum angle	123 °	123 °	123 °	123 °
Cycle time	17 s	17 s	17 s	17 s
Type of limit switch	work time	work time	work time	work time
Slowdown	no	no	no	no
Locking	Solenoid Lock	Solenoid Lock	Solenoid Lock	Solenoid Lock
Release	Reversible	Reversible	Reversible	Reversible
Impact reaction	Hydraulic clutch	Hydraulic clutch	Hydraulic clutch	Hydraulic clutch
Frequency of use	very intensive	very intensive	very intensive	very intensive
Protection rating	IP57	IP57	IP57	IP57
Environmental conditions	-10 + 60 °C	-10 + 60 °C	-10 + 60 °C	-10 + 60 °C

	LUX B	LUX BA	LUX 2B	LUX 2B WINTER
Control unit	RIGEL 6	RIGEL 6	RIGEL 6	RIGEL 6
Motor voltage	230 V	230 V	230 V	230 V



Hydraulic automation systems for swing gates

	LUX B	LUX BA	LUX 2B	LUX 2B WINTER
Power consumption	250 W	250 W	250 W	250 W
Max. width of door/gate wing	2 m	2 m	2 m	2 m
Max. weight of door/gate wing	300 kg	300 kg	300 kg	300 kg
Useful rod stroke	270 mm	270 mm	270 mm	270 mm
Maximum angle	123°	123°	123°	123°
Cycle time	17 s	17 s	17 s	17 s
Type of limit switch	work time	work time	work time	work time
Slowdown	no	no	no	no
Locking	Hydraulic closing	Solenoid Lock	Open/close hydraulics	Open/close hydraulics
Release	Triangle key	Reversible	Triangle key	Triangle key
Impact reaction	Hydraulic clutch	Hydraulic clutch	Hydraulic clutch	Hydraulic clutch
Frequency of use	very intensive	very intensive	very intensive	very intensive
Protection rating	IP57	IP57	IP57	IP57
Environmental conditions	-10 ÷ 60 °C	-10 ÷ 60 °C	-10 ÷ 60 °C	-20 ÷ 60 °C

	LUX 2B UL/CSA 120V	LUX R2B	LUX R 2B SN2	LUX FC 2B
Control unit	RIGEL 6	RIGEL 6	RIGEL 6	RIGEL 6
Motor voltage	230 V	230 V	230 V	230 V
Power consumption	250 W	250 W	250 W	280 W
Max. width of door/gate wing	2 m	2 m	2 m	2 m
Max. weight of door/gate wing	300 kg	300 kg	300 kg	300 kg
Useful rod stroke	270 mm	270 mm	250 mm	280 mm
Maximum angle	123°	123°	101°	117°
Cycle time	17 s	17 s	16+rall, s	17 s
Type of limit switch	work time	work time	work time	work time
Slowdown	no	no	Yes	no
Locking	Open/close hydraulics	Solenoid Lock	Open/close hydraulics	Open/close hydraulics
Release	Triangle key	Reversible	Triangle key	Triangle key
Impact reaction	Hydraulic clutch	Hydraulic clutch	Hydraulic clutch	Hydraulic clutch
Frequency of use	very intensive	very intensive	very intensive	very intensive
Protection rating	IP57	IP57	IP57	IP57
Environmental conditions	-10 ÷ 60 °C	-10 ÷ 60 °C	-10 ÷ 60 °C	-10 ÷ 60 °C

	LUX R 2B 25N UL/CSA	LUX FC 2B UL/CSA	LUX MB	LUX GV
Control unit	RIGEL 6	RIGEL 6	RIGEL 6	RIGEL 6
Motor voltage	230 V	230 V	230 V	230 V
Power consumption	250 W	280 W	250 W	250 W
Max. width of door/gate wing	2 m	2 m	2,3 m	3,5 m
Max. weight of door/gate wing	300 kg	300 kg	300 kg	300 kg
Useful rod stroke	250 mm	280 mm	270 mm	270 mm
Maximum angle	101°	117°	123°	123°
Cycle time	16+rall, s	17 s	23 s	17 s
Type of limit switch	work time	work time	work time	work time
Slowdown	Yes	no	no	no
Locking	Open/close hydraulics	Open/close hydraulics	Hydraulic closing	Solenoid Lock



Hydraulic automation systems for swing gates

	LUX R 2B 25N UL/CSA	LUX FC 2B UL/CSA	LUX MB	LUX GV
Release	Triangle key	Triangle key	Triangle key	Reversible
Impact reaction	Hydraulic clutch	Hydraulic clutch	Hydraulic clutch	Hydraulic clutch
Frequency of use	very intensive	very intensive	very intensive	very intensive
Protection rating	IP57	IP57	IP57	IP57
Environmental conditions	-10 ÷ 60 °C	-10 ÷ 60 °C	-10 ÷ 60 °C	-10 ÷ 60 °C

	LUX L	LUX LR	LUX G	LUX G WINTER
Control unit	RIGEL 6	RIGEL 6	RIGEL 6	RIGEL 6
Motor voltage	230 V	230 V	230 V	230 V
Power consumption	250 W	250 W	250 W	250 W
Max. width of door/gate wing	4 m	4 m	5 m	5 m
Max. weight of door/gate wing	500 kg	500 kg	800 kg	800 kg
Useful rod stroke	270 mm	270 mm	390 mm	390 mm
Maximum angle	123 °	123 °	130 °	130 °
Cycle time	33 s	33 s	48 s	48 s
Type of limit switch	work time	work time	work time	work time
Slowdown	no	no	no	no
Locking	Solenoid Lock	Solenoid Lock	Solenoid Lock	Solenoid Lock
Release	Reversible	Reversible	Reversible	Reversible
Impact reaction	Hydraulic clutch	Hydraulic clutch	Hydraulic clutch	Hydraulic clutch
Frequency of use	very intensive	very intensive	very intensive	very intensive
Protection rating	IP57	IP57	IP57	IP57
Environmental conditions	-10 ÷ 60 °C	-10 ÷ 60 °C	-10 ÷ 60 °C	-20 ÷ 60 °C

VITAL ACCESSORIES

	Cp D114092 00002 - Ci 2601365 ALCOR AC A Control unit with on-board receiver - no display - Standard terminal block		Cp D113680 00002 - Ci 2600108 ALPHA SD Universal control panel with potentiometers for one 230V/500W single-phase operator
------------------------------------------------------------------------------------	------------------------------------------------------------------------------------------------------------------------------------------------	-------------------------------------------------------------------------------------	-------------------------------------------------------------------------------------------------------------------------------------------------------

RECOMMENDED ACCESSORIES

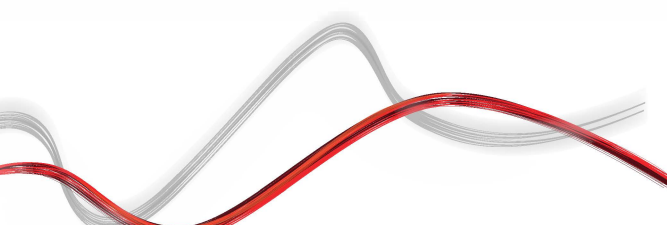
	Ph. Out Cp N733426 - Ci 2600790 ARB LUX Adjustable front and rear bracket for LUX operator		Ph. Out Cp N733474 - Ci 2600909 ARB LUX G Adjustable front and rear bracket for LUX G operator
	Cp N733424 00001 - Ci 2610950 ARB ORO - LUX Adjustable front mounting bracket for ORO and LUX		Cp N735002 - Ci 2601324 SFR B Adjustable wall bracket, short, for linear swing-gate motors (excluding P4.5-P7)
	Cp N735003 - Ci 2601367 SFR-L B Adjustable wall bracket, long, for linear swing-gate motors (excluding P4.5-P7)		Cp N735002 00001 - Ci 2601273 SFR B - COMPLETE Adjustable wall bracket, short, for linear swing-gate motors (excluding P4.5-P7), with flat bracket



Hydraulic automation systems for swing gates

RECOMMENDED ACCESSORIES

	<p>Cp N735003 00001 - Ci 2601392 SFR-L B - COMPLETE</p> <p>Adjustable wall bracket, long, for linear swing-gate motors (excluding P4.5-P7), with flat bracket</p>		<p>Cp D730178 - Ci 2600090 PLE</p> <p>Anchor plate for attaching the rear mountings to masonry pillars for LUX, ORO, and PHOBOS operators.</p>
	<p>Cp D111013 - Ci 2607261 ME</p> <p>Control board for 12Vac solenoid lock for 230V automation systems</p>		<p>Cp D610180 - Ci 2600598 CLS</p> <p>Triangular release key l=52 mm</p>
	<p>Cp P111782 - Ci 2601411 COMPACTA A20-1B0</p> <p>Pair of photocells adjustable 180° horizontally. 20 metre range. 12-33 VAC/15-35 VDC power supply.</p>		<p>Cp D114094 00002 - Ci 2607540 RADIUS LED AC A RO</p> <p>Flashing light without incorporated antenna for motors with 230 V power supply.</p>
	<p>Cp D114093 00002 - Ci 2607538 RADIUS LED AC A R1</p> <p>Flashing light with incorporated antenna for motors with 230 V power supply.</p>		<p>new Cp P123032 00001 - Ci 2613516 EBP AC A 230V 50/60HZ</p> <p>230V vertical electric lock.</p>
	<p>new Cp P123032 00002 - Ci 2613517 EBP AC A 120V 50/60Hz</p> <p>120V vertical electric lock.</p>		





LUX



Hydraulic automation systems for swing gates

EasyAXS

EASY CONNECT. EASY ACCESS.



The new connectivity solution which boosts the potential of BFT products and services to make access automations smarter and easier to use for both installers and end users.





LUX



Hydraulic automation systems for swing gates

EASY TO CONNECT

WIFI MODULE



→ 10/15 metres

WIFI MODULE + ANTENNA



→ 20/25 metres

MOBILE MODULE + ANTENNA + SIM



→ ∞



**PLUG&PLAY
INSTALLATION**



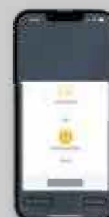
**ALWAYS
CONNECTED**



**EVEN MORE
CONNECTIVITY**



**EASY TO SET UP
FOR INSTALLERS**



**EASY TO CONTROL
FOR CUSTOMERS**





Hydraulic automation systems for swing gates



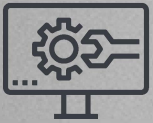
U-LINK 2.0

AN UPDATED VERSION OF **U-LINK** TO GIVE YOU EVEN MORE FUNCTIONALITY



Scalable

You can add as many devices as you want



Intuitive

Easy to install and to use



Functional

Settings can be controlled and firmware updated remotely using dedicated applications



Practical

Works with or without an internet connection



Flexible

It allows you to create groups of interconnected products

U-Link, the exclusive **BFT** technology platform has evolved to offer improved interaction with the latest generation of technological ecosystems. Its ability to interface with all home access automation access devices has been expanded, meaning it is now a very useful tool for installers. It is also a faster communication protocol with increased security for communicating information.

It allows you to save even more time, checking everything very easily and giving you even more peace of mind.



Hydraulic automation systems for swing gates

U-SECURITY

A NEW AND EVEN MORE SECURE RADIO PROTOCOL



→ **Secure**
By transmitting data protected by a cryptographic key

U-Security is the new technology from **BFT** which incorporates encrypted rolling code thanks to the encryption key which masks the remote control code, meaning that it is impossible to clone a BFT remote control using another brand's model.

The functions of the **Er Ready** system are incorporated and a new procedure is also available for programming remote controls by scanning a QR CODE and using a special app. All products featuring this technology are **REPLAY**, so they can transmit the code to another BFT remote control using a combination of keys.



→ **Easy**
Pairing a remote control with a receiver can be done easily by scanning the QR code and using the dedicated app



→ **Universal**
The radio protocol is also compatible with the previous generation of receivers

