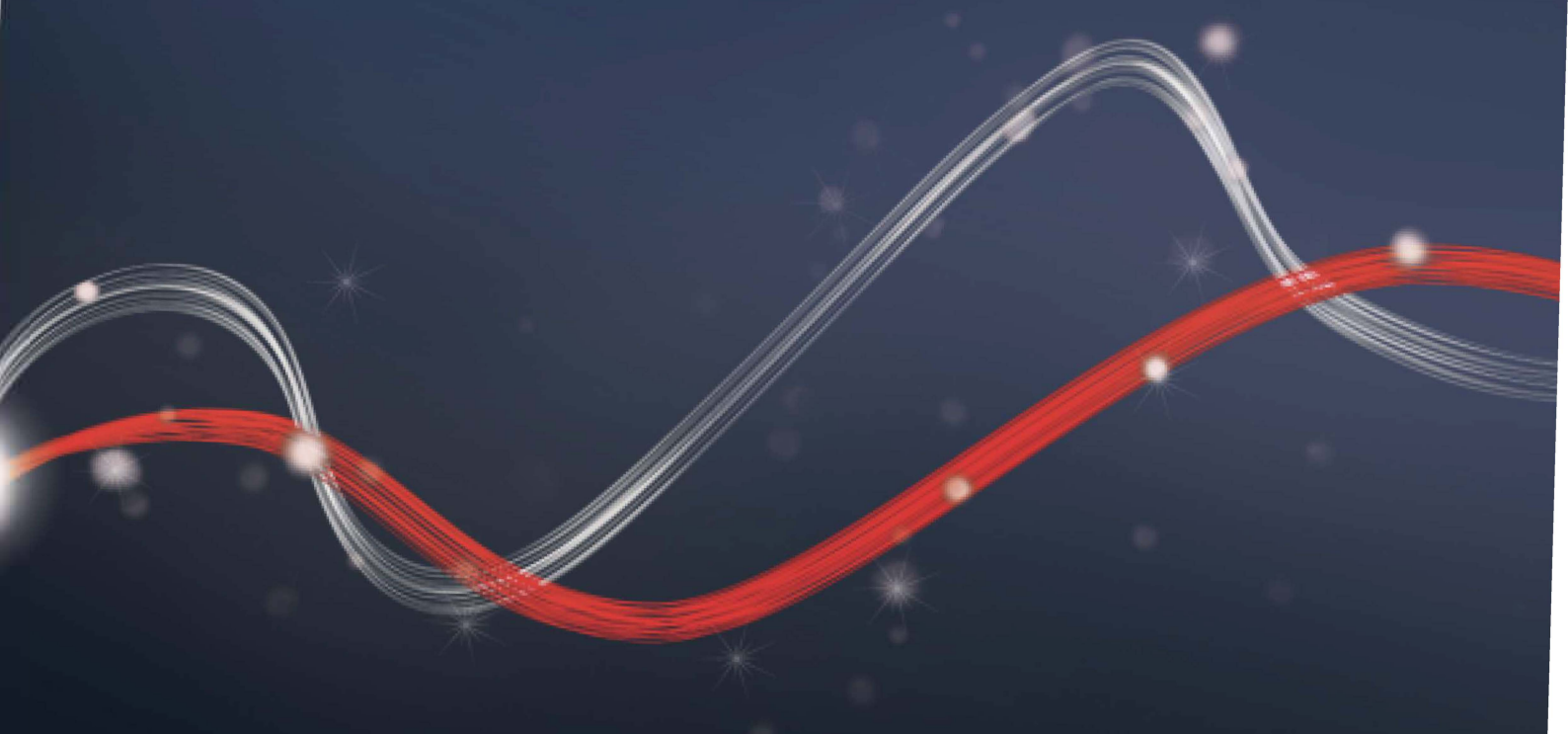




Be ahead



# THALIA



## Control panels



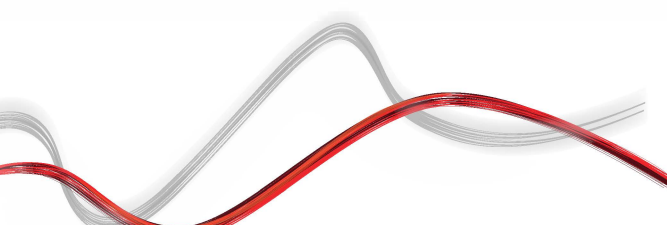
Control panel with display for one or two 24V electromechanical operators used on 230V/500W swing gates (Power version). The dual-channel radio receiver is incorporated. It has a crush-proof system based on D-Track technology, controls the slowing down when opening and closing and has an electronic self-learning function. The main functions include automatic closing, fast closing, partial opening and hold-to-run operation.

### Relevant features

The terminal boards are coloured and can be removed to make it easier to perform the wiring.

## THALIA

Code	Ci	Name	Description	
D113747 00001	2607487	THALIA P 120V	THALIA LEB - 12x14 LARGE ENCLOSURE WITH 9AMP/H BATTERIES	U-Link
D113747 00002	2600583	THALIA P	Control panel for one or two 24V electromechanical and hydraulic operators for swing gates with electric lock management, for highly complex systems	U-Link
D113745 00002	2600477	THALIA	Control panel with display for one or two 24V electromechanical operators for swing gates	U-Link
D113745 00001	2607483	THALIA 120V	Control panel with display for one or two 24V electromechanical operators for swing gates	U-Link
I300211 10001	2613928	THALIA	Thalia control panel for one or two 24 V electromechanical operators for swing gates	U-Link





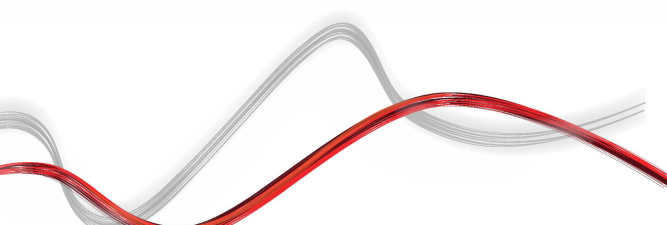
# THALIA



## Control panels



	THALIA P 120V	THALIA P	THALIA	THALIA 120V
<b>BASIC CHARACTERISTICS</b>				
Maximum output	240+240 W	240+240 W	180+180 W	180+180 W
Board power supply	110-120 V	220-230 V	220-230 V	110-120 V
Max. n. transmitters	63	63	63	63
Programming	Display	Display	Display	Display
Power supply accessories	24V - 1A	24V - 1A	24V - 1A	24V - 1A
<b>CONFIGURATION OF SAFETY INPUTS</b>				
Light sensor	●	●	●	●
Safety edge	●	●	●	●
Resistive edge	●	●	●	●
Tested photocell	●	●	●	●
Tested safety edge	●	●	●	●
Stop	●	●	●	●
<b>CONFIGURATION OF CONTROL INPUTS</b>				
Start	●	●	●	●
Traffic light control	●	●	●	●
Open	●	●	●	●
Close	●	●	●	●
Pedestrian open	●	●	●	●
Open with timer	●	●	●	●
Pedestrian open with timer	●	●	●	●
<b>OUTPUTS</b>				
Blinker	24V - 1A	24V - 1A	24V - 1A	24V - 1A
Configurable AUX 1	230 - 5A	230 - 5A		
Configurable AUX 2	230 - 5A	230 - 5A		
Configurable AUX 3	24V - 1A	24V - 1A	24V - 1A	24V - 1A
Solenoid Lock	12/24V	12/24V		
<b>OUTPUTS CONFIGURATION</b>				
Courtesy light	●	●	●	●
Zone light	●	●	●	●
Stairs light	●	●	●	●
Gate open alarm	●	●	●	●
Blinker	●	●	●	●
Electric release lock	●	●	●	●
Electric magnetic lock	●	●	●	●
Maintenance	●	●	●	●
Flashing + Maintenance	●	●	●	●
Gate open warning light	●	●	●	●

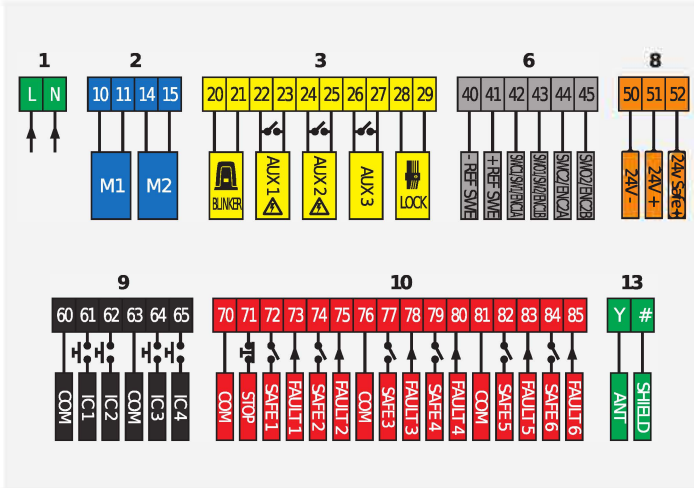


## Control panels



## Connecting diagram

D113747 00002 - THALIA P



D113745 00002 - THALIA

