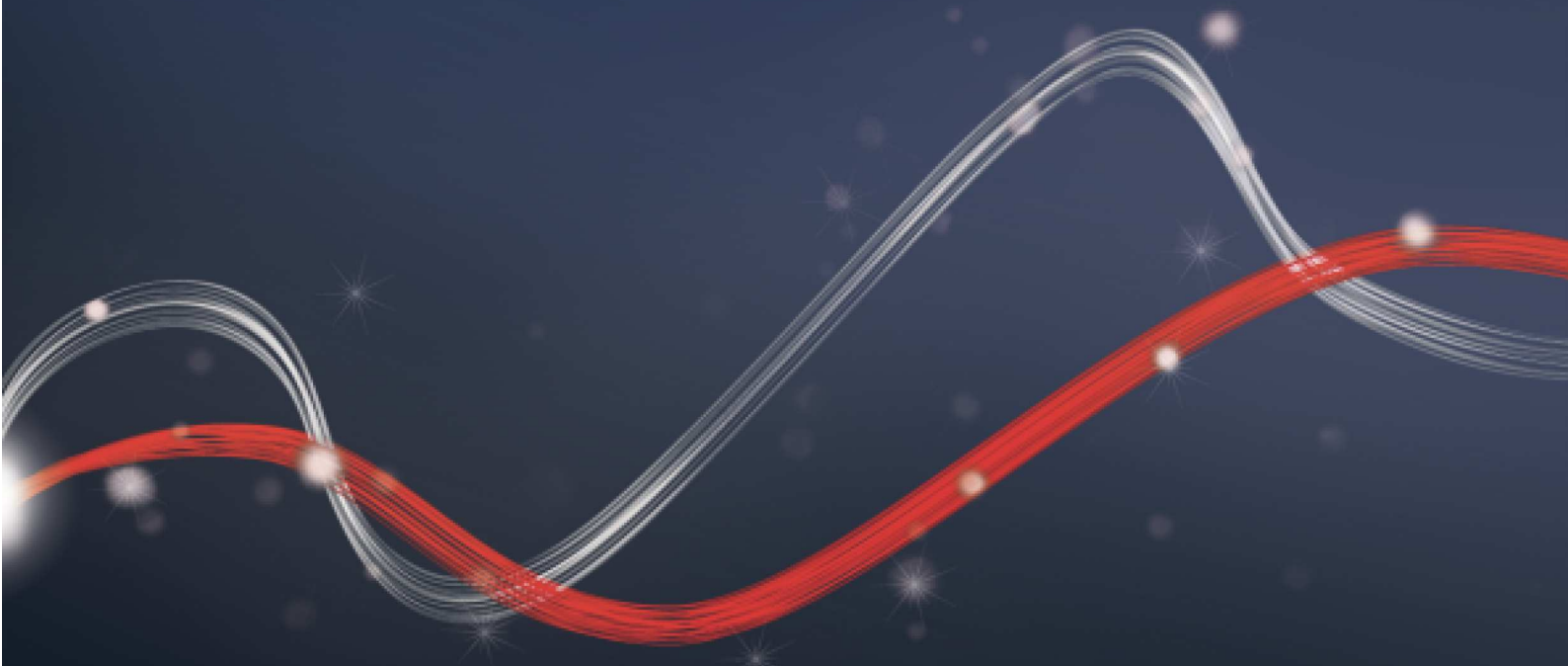




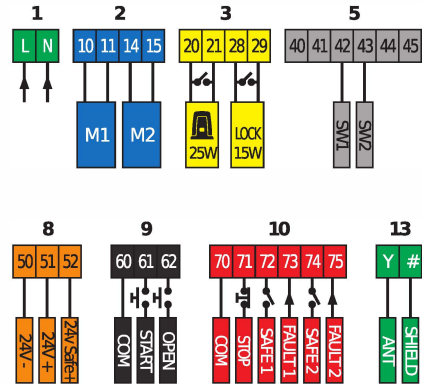
Be ahead



ZARA



Control panels



Control panel with dip switches and potentiometers for one or two 24V electromechanical operators for 230V/80W swing gates. The dual-channel radio receiver is incorporated. The torque is electronically adjusted with an obstacle detection system. The strength of the gates and slowing down space can be adjusted with the potentiometers. Key functions include automatic closing, fast closing, pulse locking when opening and pressure surge when opening. It supports the EELINK protocol.

Relevant features

The terminal boards are coloured and can be removed to make it easier to perform the wiring.

ZARA

Code	CI	Name		Description
D113796 00002	2607507	ZARA BT L2		Control panel with dip switches and potentiometers for one or two 24V operators for swing gates.
D113796 00001	2607506	ZARA BT L2 120V		Control panel with dip switches and potentiometers for one or two 24V operators for swing gates.

Control panels

	ZARA BT L2	ZARA BT L2 120V
BASIC CHARACTERISTICS		
Maximum output	40+40 W	40+40 W
Board power supply	220-230 V	110-120 V
Max. n. transmitters	63	63
Programming	DIP+TRIMMER	DIP+TRIMMER
Power supply accessories	24V - 0,2A	24V - 0,2A
CONFIGURATION OF SAFETY INPUTS		
Light sensor	●	●
Safety edge	●	●
Resistive edge	●	●
Tested photocell	●	●
Tested safety edge	●	●
Stop	●	●
CONFIGURATION OF CONTROL INPUTS		
Start	●	●
Open	●	●
OUTPUTS		
Blinker	24V - 1A	24V - 1A
Solenoid Lock	●	
OUTPUTS CONFIGURATION		
Electric release lock	●	

Connecting diagram

D113796 00002 - ZARA BT L2

