



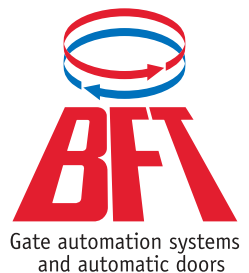
P7-P4.5

Safety and efficiency according to your needs

Possibility of selecting one of two versions available according to the length of the leaf

Limiting device with timer controlled from control panel

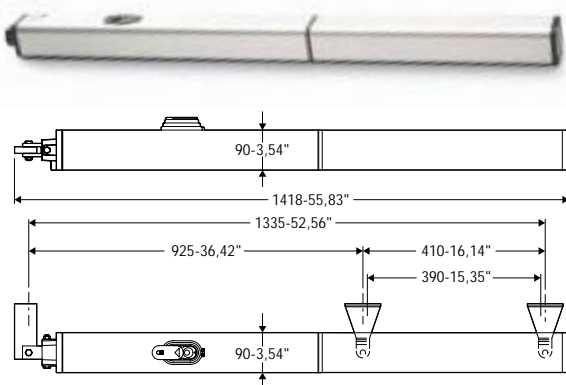
Anti-squash safety with two by-pass valves on motor structure.





P7-P4.5

Safety and efficiency according to your needs



P4,5, P7 are two oil-hydraulic pistons for gates with a max. weight of 1100 lb (500 kg) ideal for large installations or industries. The sturdy controller along with the single-phase 2-pole motor protected by a thermal cut out switch ensure a maximum pushing force of 1400 lb (650 kg) on mod. P4.5 and 1760 lb (800 kg) on mod. P7.

A full range

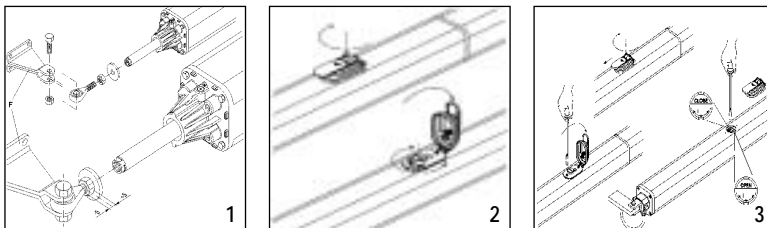
P7: for gates with a length of up to 22.97ft (7 mt) and opening time of 45 s.
 P4,5: for gates with a length of up to 14.76ft (4,5 mt) and opening time of 30 s.
 All versions are provided with an eye bolt which allows the rod to be lengthened or shortened by approximately 0.2 in (5 mm). This adjustment allows the rod stroke to be corrected (fig. 1).

Manual opening (fig. 2)

In case of emergency, open the electric lock by means of the appropriate key to release the gate, and open the leaf manually; you may also reach the release knob to facilitate the manoeuvre. In order to get access to the release knob, move the small cap in the direction indicated by the arrows to reveal the lock, insert the key, turn it clockwise by 90° and lift the entire release cover by pulling with the key. The knob must be allowed to turn as far as possible in the direction indicated by the arrows. "Open" to release, "Close" to lock, and so restore the actuator electrical operation.

Pushing force adjustment (fig. 3)

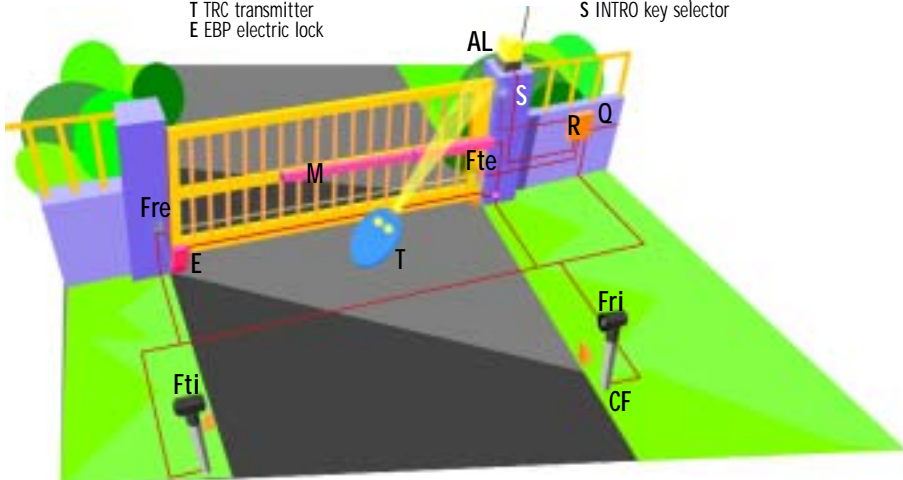
Unscrew the two fixing screw and remove the entire release system. The pushing force is adjusted by two valves marked with the writing "Close" and "Open" respectively, which are used to adjust the closing and opening pushing force. Turn the valves towards the (+) sign to increase the force transmitted; turn the valves towards the (-) sign to reduce the force.



Recommended installation

- M P4.5 or P7 operator
- Q control board
- R INTRIC1 receiver
- T TRC transmitter
- E EBP electric lock

- Ftx-Frx FL 130 photocells
- CF CF 130 photocell posts
- AL SL 433 Lampo PA antenna and blinker
- S INTRO key selector



The locking on closing is ensured by the electric lock (mod. EBP) which can be used to close the gate in case of failure of the actuator or blackout.



EBPE 52 - EBPE 75: 110Vac electric lock with null resistance at the stop, with external release for max 2 in (50 mm) (EBPE 52) and 3 in (75 mm) (EBPE 75) thick doors and gates.

EBP: 110Vac electric lock with null resistance at the stop.



EBP24: 24Vac electric lock with 110/24V transformer to be inserted in the control unit panel.

CLS: Release key

Recommended control units for P7-P4.5:



Technical features

Operator P7 - P4.5
Power supply 120 Vac ± 10% 60 Hz
Motor 2800 min ⁻¹
Absorbed power 250W
Max. pressure 5MPa (50bar) - 4Mpa (40bar)
Pump capacity 0.13Gal/min - 0.21Gal/min
Pushing force 1760 lb - 1400 lb (8000N - 6500N)
Towing force 1400 lb - 1146 lb (6500N - 5200N)
Type of lock electric lock
Working stroke 15.35 inches (390 mm)
Slow-down stroke 0.79 inches (20 mm)
Mechanical slow-down on closing
Impact reaction hydraulic clutch
Manual manoeuvre release key
Degree of protection NEMA 3 (IP55)