

Complete range of electromechanical pistons for residential use, suitable for swing gate leaves up to 5 metres wide and weighing up to 250 kg.

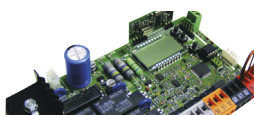
The exclusive management and control system* allows extremely accurate movement and total anti-crushing safety.

*(in all BT versions, thanks to the THALIA control unit)

Code	
P935067 00004	PHOBOS N
P935073 00003	PHOBOS N L
P935073 00002	PHOBOS L
P935067 00001	PHOBOS N 120
R935248 00002	KIT PHOBOS N ITA
R935251 00003	KIT PHOBOS N FRA
R935252 00003	KIT PHOBOS N L FRA



PLUS



Control unit with programming display and new, simplified scenario-based programming and new standard terminal blocks.



Single-cable limit switch system incorporated into rod to simplify and speed up installation.



Aluminium structure with high-strength anodising treatment.

Technical features

	PHOBOS N	PHOBOS N L	PHOBOS L
Control unit	ALTAIR P		
Operator weight	5 kg	7.7 kg	
Operator type	electromechanically operated swing gates	electromechanically operated swing gates	electromechanically operated swing gates
Power supply	230 V	230 V	230 V
Power input	210 W	210 W	210 W
Useful rod stroke	365 mm	481 mm	365 mm
Maximum angle	120 °	128 °	118 °
Cycle time	14 sec	18 sec	
Type of limit switch	work time	work time	
Impact reaction	electric clutch	electric clutch	electric clutch
Locking	mechanical	mechanical	mechanical
Release	triangle key	triangle key	triangle key
Frequency of use	semi-intensive	semi-intensive	semi-intensive
Environmental conditions	from -20 °C to 50 °C		

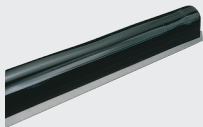
ACCESSORIES



RIGEL 5 - D113693 00003
Universal control panel for one or two 230V operators - 600+600W



ALTAIR P - D113703 00002
Control panel for one or two 230V/300W operators for swing gates and industrial folding doors



BIR C - N190104
Rubber safety edge (H 30 mm), price per m



VENTIMIGLIA NS - P111401 00001
Infrared device for BIR C or BAR C safety edges (conforms to EN 12978 Standard)



ME - D111013
Control board for 12Vac solenoid lock for 230V automation systems



ECB VERTICALE - D121018
Vertical solenoid lock, 12-24V



PLE - D730178
Anchor plate for welding the mountings to masonry pillars for LUX and PHOBOS N operators



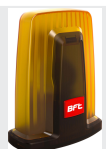
ARB PHOBOS N - N733427
Front and rear adjustable bracket for PHOBOS N, PHOBOS N BT operator



ARB PHOBOS N L - N733428
Front and rear adjustable bracket for PHOBOS NL, PHOBOS NL BT operator



RADIUS B LTA 230 R1 - D113748 00002
Flashing light with incorporated antenna for motors with power supply 230 V. Flashing beacon with built-in antenna for 230V motors

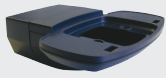


RADIUS B LTA 230 R2 - D113749 00002
Flashing light without incorporated antenna for motors with power supply 230 V. Flashing beacon without built-in antenna for 230V motors



B 00 R01 - P123026
Metal guard for B LTA

ACCESSORIES



B 00 R02 - P123025
Wall mounting for B LTA series flashing beacons



Mitto B Rcb02 R1 - D111904
Transmitter with channels. Range . Power supply with 1 battery type 23 A



Q.BO TOUCH - P121024
Wireless digital touch button panel
433Mhz rolling code.



Q.BO KEY WM - P121022
Key selector for outdoor use with double contact.



DESME A15 - P111526
Pair of self-aligning photocells. Range 30 m. Power supply 24 V ac/dc. Pair of self-aligning photocells. Range 30 m. Power supply 24 V ac/dc.



PHP - P903018
Pair of aluminium posts for THEA/DESME photocells



CABLE N - N999405
Control unit connecting cable for PHOBOS N/PHOBOS NL. Coil of 100 m



CMS - D831081
Sign